

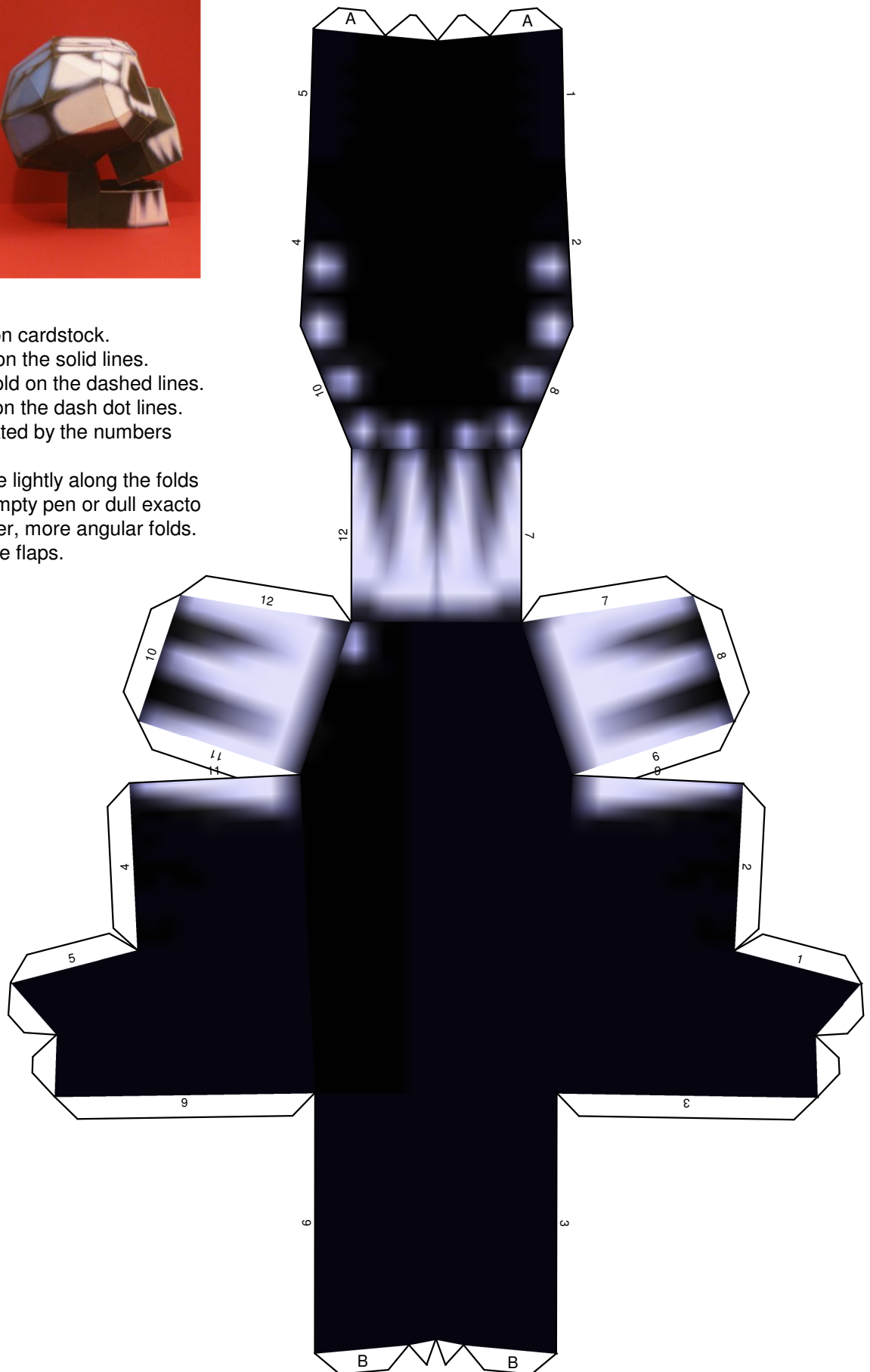
# Oogie's Manor Skull

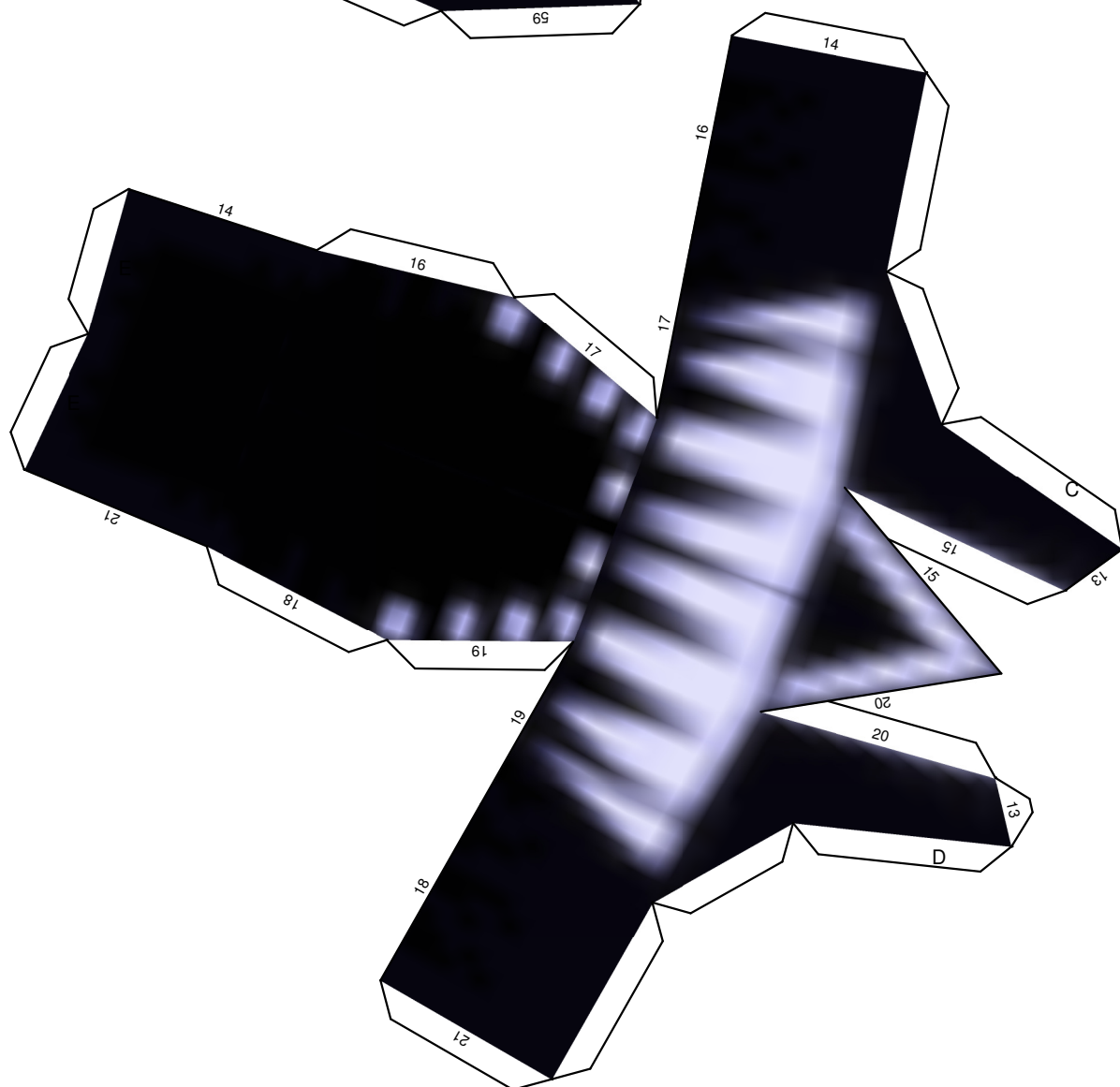
as seen in the Kingdom Hearts 2 video game



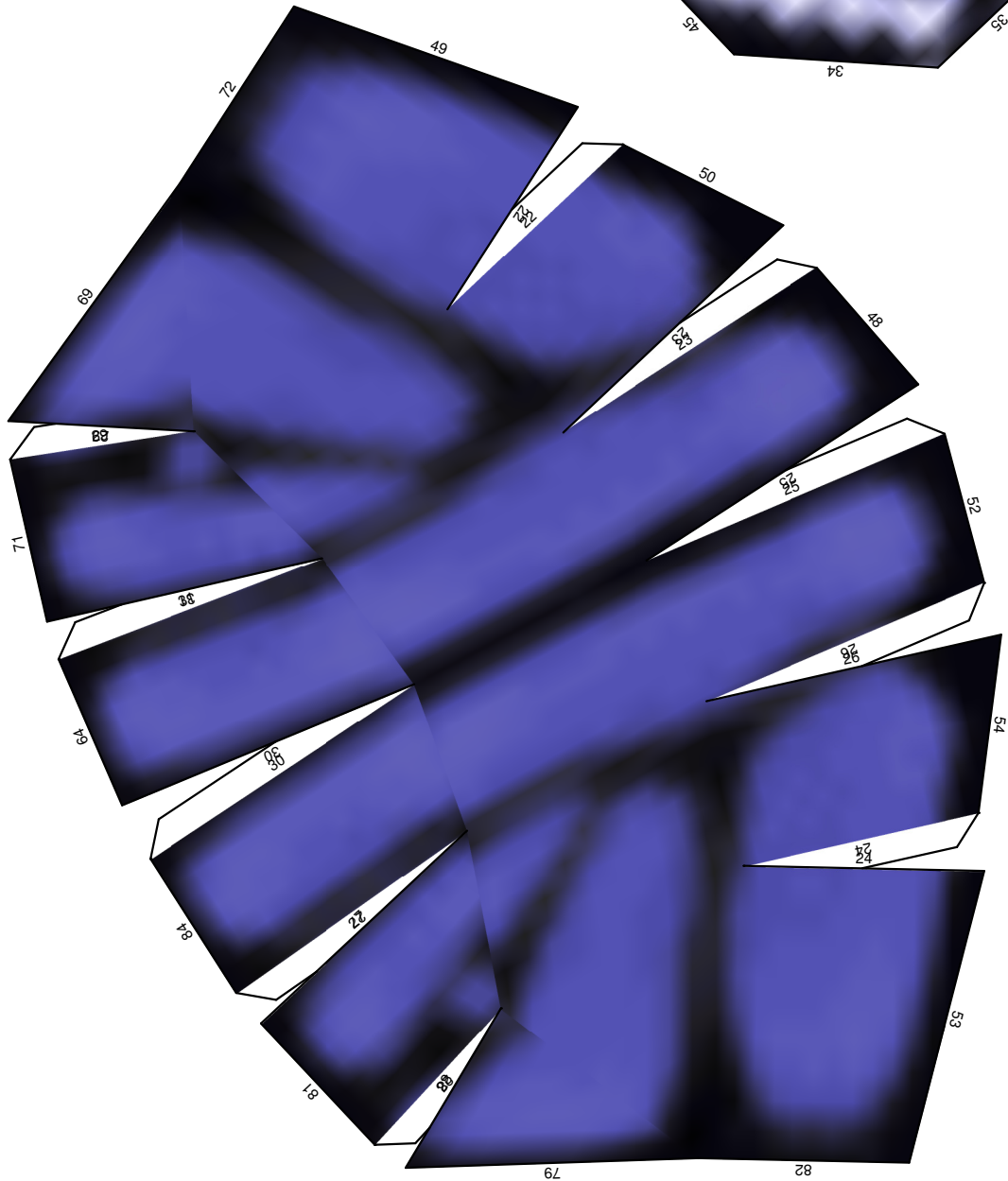
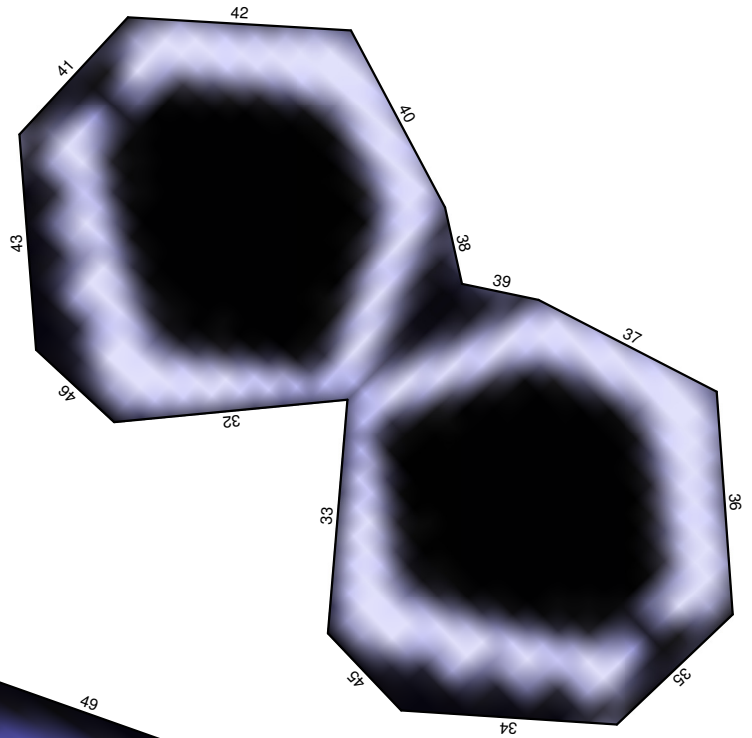
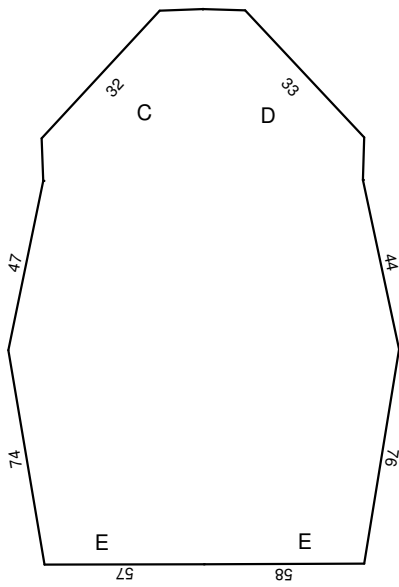
## INSTRUCTIONS:

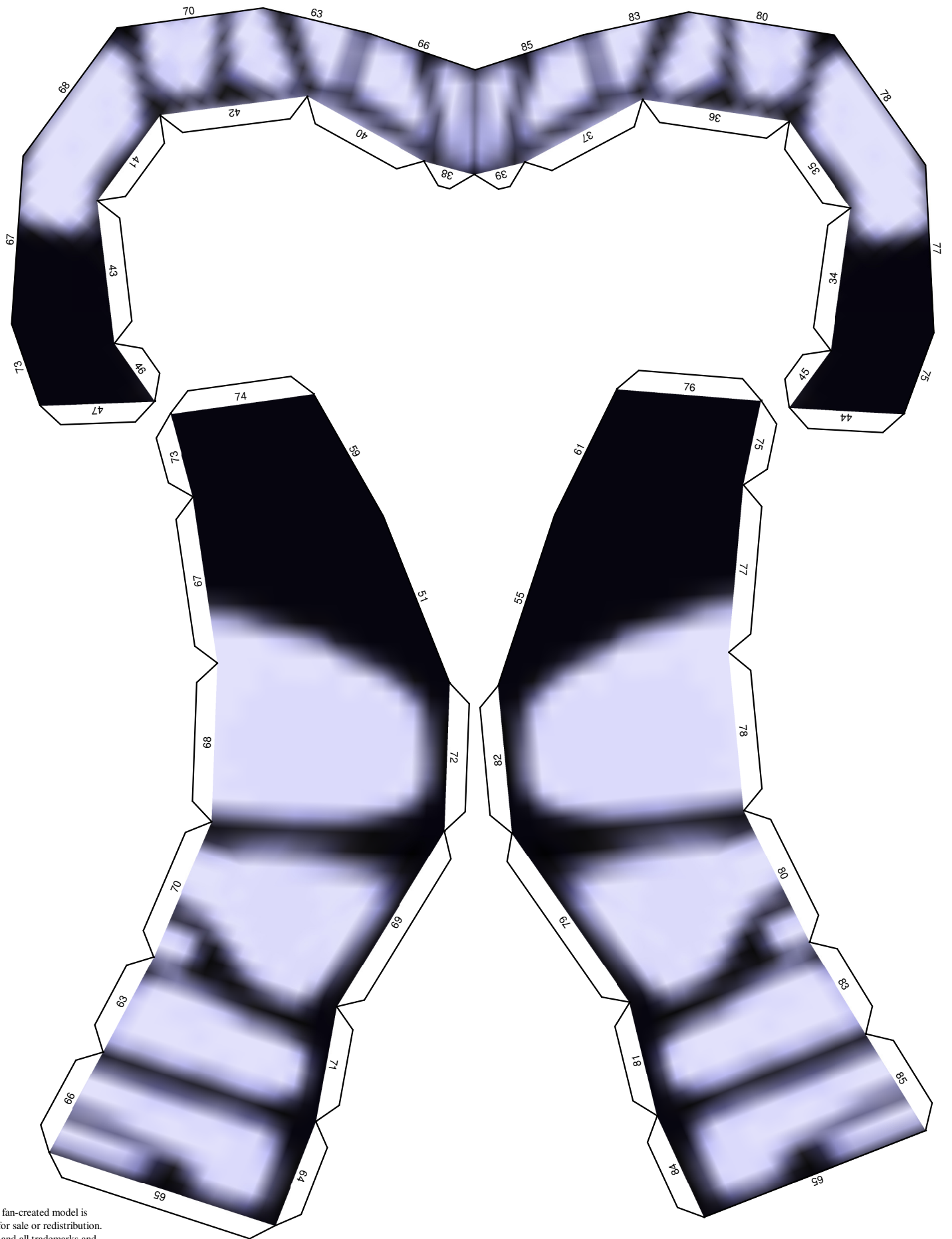
1. Print the template on cardstock.
2. Cut out the pieces on the solid lines.
3. Make a mountain fold on the dashed lines.
4. Make a valley fold on the dash dot lines.
5. Assemble as indicated by the numbers and letters.
6. Before folding, trace lightly along the folds with a ruler & an empty pen or dull exacto type knife for cleaner, more angular folds.
7. Glue sparingly at the flaps.





This fan-created model is not for sale or redistribution. Any and all trademarks and copyrights are the properties of their respective owners. Model design © 2011 C. Jefferson OConnor, [www.tektonten.blogspot.com](http://www.tektonten.blogspot.com)





This fan-created model is  
 not for sale or redistribution.  
 Any and all trademarks and  
 copyrights are the properties  
 of their respective owners.  
 Model design © 2011  
 C. Jefferson OConnor,  
[www.tektonten.blogspot.com](http://www.tektonten.blogspot.com)